

418 E. MAIN ST.

BLOOMFIELD

Nebraska

\$92,500

2 BEDROOM RANCH



Approximate Room Measurements:

Master Bedroom: 16 x 11

Bedroom #2: 11 x 11

Kitchen/Dining Room: 21 x 13

Living Room: 14 x 21

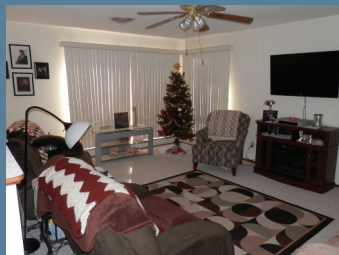
Laundry Room: 13 x 13

Garage: 14 x 24

Approximately: 1260 sq.ft.

Built in 1968

2017 Taxes: \$816



Very nice, well maintained 2-bedroom, 2-bathroom home with an open basement and lots of storage and closet space. This home is not located in a flood plain, sits right along Hwy. 84 for easy access and comes with all kitchen appliances plus washer and dryer (all less than two years old). The gazebo in the backyard has electricity and is a great place to relax or entertain.

View more photos online:

www.brunslanlandandhomellc.com



P.O. Box 250 • 212 North Broadway | Bloomfield, NE 68718
Phone: 402-373-2727 • Mobile: 402-841-7320 • Fax 402-373-2707

Kelly Bruns, Broker 402-841-7320
Website: brunslanlandandhomellc.com

